

ELECTRIC SCOOTER

USER INSTRUCTION



The electric scooter is a kind of new fashion sports ware. It can be replace to walking. it's a energy saving, entertaionment, envirment protection sports ware.

Our products have small body, Long lice, easy for carry, and easy rot repair. Please let our products electric scooter stay with you everyday.

In order to our produces more better sever for you.

Please carefully reading the use specification before scooter.

I .CONSTRUCTION

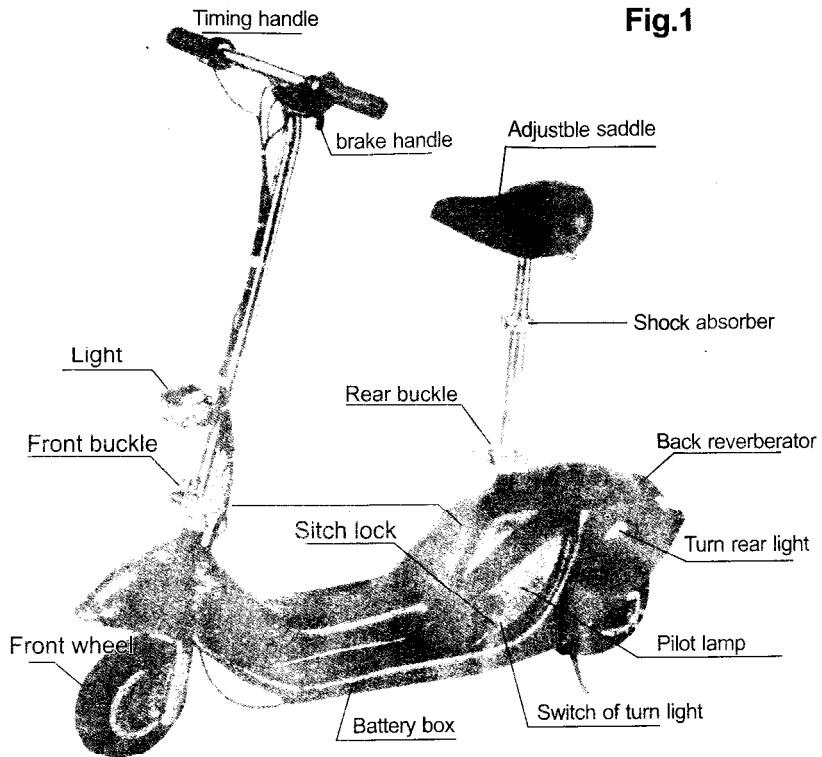


Fig.2

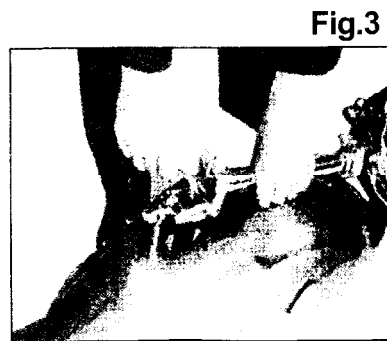
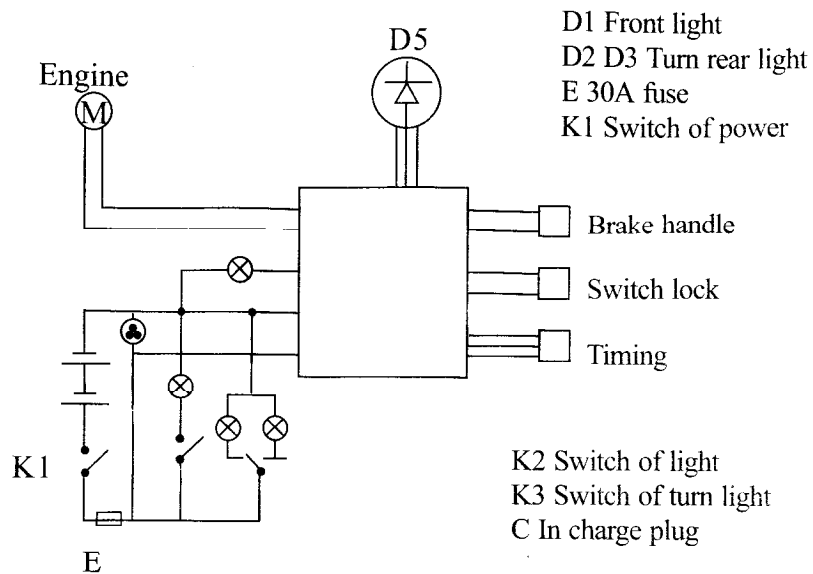


Fig.3

II. CHART OF CIRCUIT



III. THE PERORMANCE DETAILS FOR MAIN ELECTRICAL EQUITMENT

1. Engine

Model	Rated voltage	Rated current	Output power	Rated speed
MY1025	DC24V	10.35A	180W	2750r/min

2. Charger

Model	Output current	Input voltage	Charging period
TF-100	1.5A	AC90-250V	<6h

3. Battery

Model	Nominal capacity	Voltage	Weight	Charging times
-------	------------------	---------	--------	----------------

6DW-12	7Ah	2*12V	2*4.4kg	300times
--------	-----	-------	---------	----------

IV . ASSEMBLE FOR NEW SCOOTER AND CHECK WAY

1. Front handle: Install the plum screw of the flexible handles firstly, (lose) and make tight the screw of the plum lock, then turn tight the screw.
2. Bicycle saddle: Put the saddle to the rear position. Then turn tight the screw.
3. Whole body check: Turn on the switch of the power and switch key, check it if light. The rear brake if ok. The air pressure of tyre is normal, The screws of every parts if loosen. After check everywhere is ok. Then can for road test.

V . SPECIAL CAPABILITY FOR SPARE PARTS

1. Timing handle, activator, brake handle, when brake the scooter. The brake handle will be cut off the power of engine automatically. The timing handle can be control the speed of scooter automatically. The activator can be protect when in charge , discharge automatically, and indicate the battery capability.
2. Mobile charger: Automatically exchange and automatically adjust the charger.
3. Battery: Big capability, pollution protect. Long live.

Saddle: Can be adjust flexible and have shock absorber.

VI. TECHNICAL DETAILS

1. Normal speed:18Km/h
2. Extend distance:14Km
3. Wight: NW24Kg, GW28Kg
4. Mesa: 107x35x46cm
5. Air pressure of tire: $2 \pm 0.2\text{Kg/cm}^3$

VII. XORRECT OPERATION

1. One person and non-engine road drive only.
2. Don't be drive in rainy day and high speed turn.
3. Don't be borrow to others who doesn't know how to use.
4. Turn on the switch of power and key of engine before driving.

VIII. MAINTAINCE OF ELECTRICAL SCOOTER

1. In charge promptly after driving one the same day It's will be protect battery.
2. Must be less 18 boors for one time in charge, normally 4-6 hours is enough.
3. Please in charge the scooter as soon as you will holding it for long time. It can be extend the life of the battery.
4. Please check the bolt and nut offerly. Please adjust the length of chain if the chain need to adjust.Please add some lube of need to lubricate.

Don't put in the sun shine, and don't thought the old battery in the fire.
Don't upend.

IX. THE HITCH FOR SCOOTER AND HOW TO ELIMANATE

1. When the power switch closed, no indicate light, can't driving.

- a. Electrical lines inside had broken. ---Check it and reconnect it.
- b. Fuse damaged. ---Change new.
- c. Switch, lock damaged. ---Change new.

2. Switch, lock all closed, no indicate light, can't driving.

- a. Timing handle cut off the lines (red black green), if the lines are not broken, then the damaged had been damaged. ---change new.
- b. Engine damaged. ---Change new.

3. Power switch and lock closed, timing handle lose control.

- a. Activator damaged. ---Change new.
- b. Control lines (red black green) got wrong connection. Check it and correct connect.

4. Very low speed and engine less power.

- a. No more battery. ---In charge prompt.
- b. Less air pressure of tyre. ---Fill it.
- c. Too tight brake. ---Adjust it.
- d. Bearing damaged. ---Change new.
- e. Battery damaged. ---Change new.
- f. Bad connection of main lines for electrical. Reconnect after clear body.
- g. Bad install bearing --- Re-install.

5. Prompt broken when install fuse.

- a. Bus damaged. ----Check it.
- b. Bus wrong connect. ----Check it.
- c. Actiyator damage. ----Change new.

X . TFTER SALES SERVICE AND REPAIR OF ELECTRIC SCOOTER

1. If find any problems with our products during use, please contact with the retailer as soon as possible. The retailers will be check with your products, repair method of scooter is same with motorcycle and bile.
2. If the battery, engine, charger, chain, are damaged between 6 month. Activator damaged between 3 month. The retailer will be inform us to replace or erpair. The valid date is according to the formal invoice from you bought scooter date.
3. Repair charges: I f any spare parts damages in the valid date. All the charges of repair charges will be responsible by manufacturer. If the spare parts damaged not in the valid date. The repair charges will be responsive by buyer.